

HONDA
The Power of Dreams

How we move you.
CREATE ► TRANSCEND, AUGMENT



CIVIC

Honda Atlas Cars (Pakistan) Limited
43 km Multan Road, Manga Mandi, Lahore
www.honda.com.pk



The 11th Generation All-New Honda Civic is here to take you by storm. With a premium sporty design aesthetic and mesmerizing advanced technologies/features, Civic is being offered in the following variants:

Civic Oriel: 1.5L Turbo M-CVT | Civic RS: 1.5L Turbo LL-CVT

So get ready to step into the future with the most exciting vehicle ever. Absolute brilliance that will blow your mind away. Super classy and luxurious!

— THE ALL NEW 2022 —
CIVIC
A CLASS THAT SHINES THROUGH



RS
1.5 VTEC TURBO

RS 1.5 VTEC TURBO

A 1.5-liter VTEC TURBO 176 HP engine with Programmed Fuel Injection technology and a Turbocharger that provides enhanced acceleration and excellent fuel economy.



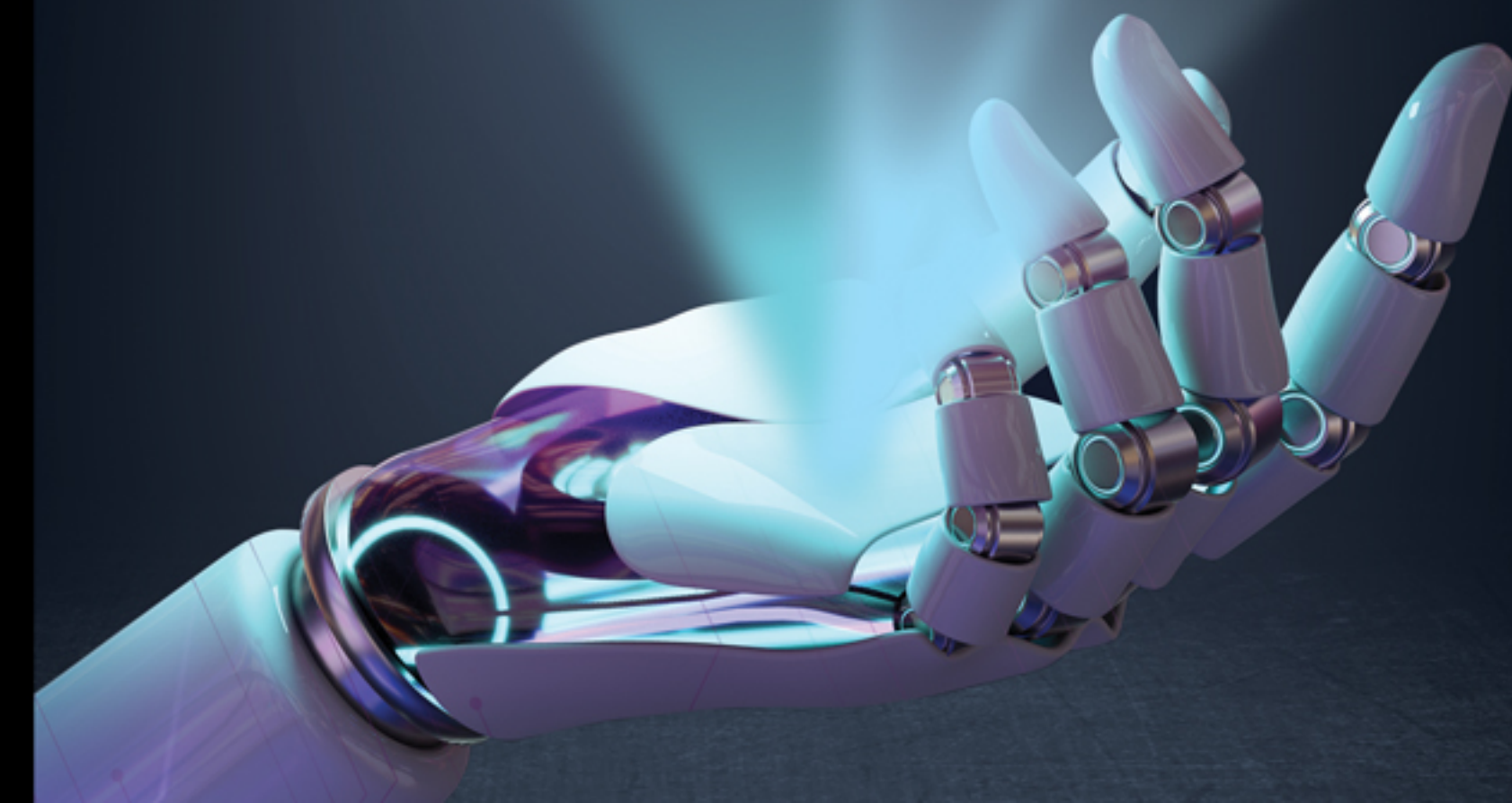
SMART ENTRY WITH REMOTE ENGINE START:

- With the key in your pocket, the doors will unlock as you approach.
- Start the vehicle engine with a simple push of a button even before entering the car.
- Car doors lock automatically when the remote key is away from the vehicle.



CARD KEY:

Smart door control system with the new Honda Smart Key Card, elegant design, easy to carry, allowing you to lock and unlock the car.





AN AMALGAMATION OF CLASS & INNOVATION



DOOR MIRROR:
Add an exclusively to the exterior with Black Painted door mirrors. Side turn indicator blink in door mirrors for improved visibility to road users.



FOG LAMPS:
Cutting edge LED fog lights improve road visibility to a whole new level.

ILLUMINATE THE ROAD PRECISELY



**TOUGH AND MASCULINE
LOOKING LED HEAD LIGHTS**

DAY TIME RUNNING LIGHT:
Make a distinctive impression to enliven the look. DRL have on/off option.

AUTO LIGHT CONTROL:
Headlights turn on or off depending on ambient brightness when the vehicle is on.



AUTO HEADLIGHT ADJUSTER:
Adjusting the lights for the longest and widest coverage of light in front of the car automatically to give Auto Head-Light Adjustment.

AUTO HIGH BEAM:
When the headlight control is in the AUTO position, this system automatically turns on the high beams when there are no other vehicles detected ahead. When another vehicle is detected, the high beams are automatically switched to low beams.

ONE TOUCH WINKER:
For convenient lane change.



IMPECCABLE AND HIGHLY SOPHISTICATED



AN ABSOLUTE STUNNER



REAR SEATS



DRIVER SEAT HEIGHT ADJUSTER:
Personalize the driving position by adjusting seat the way you like.



REAR AC VENTS:
Gives a new meaning to temperature control making the whole cabin comfortably cool.



REAR SEAT ARMREST:
Space to hold your beverages.



REAR SEAT ISOFIX



NEW GENERATION STYLE FRONT GRILL



BLACK PAINTED DOOR HANDLES: Highly impressive black painted door handles.



RAIN SENSOR: Automatically activate wipers.



SMART CLEAR AUTO WIPERS: Water goes through the nozzles installed in the wiper for precise and detailed cleaning of the windscreen.



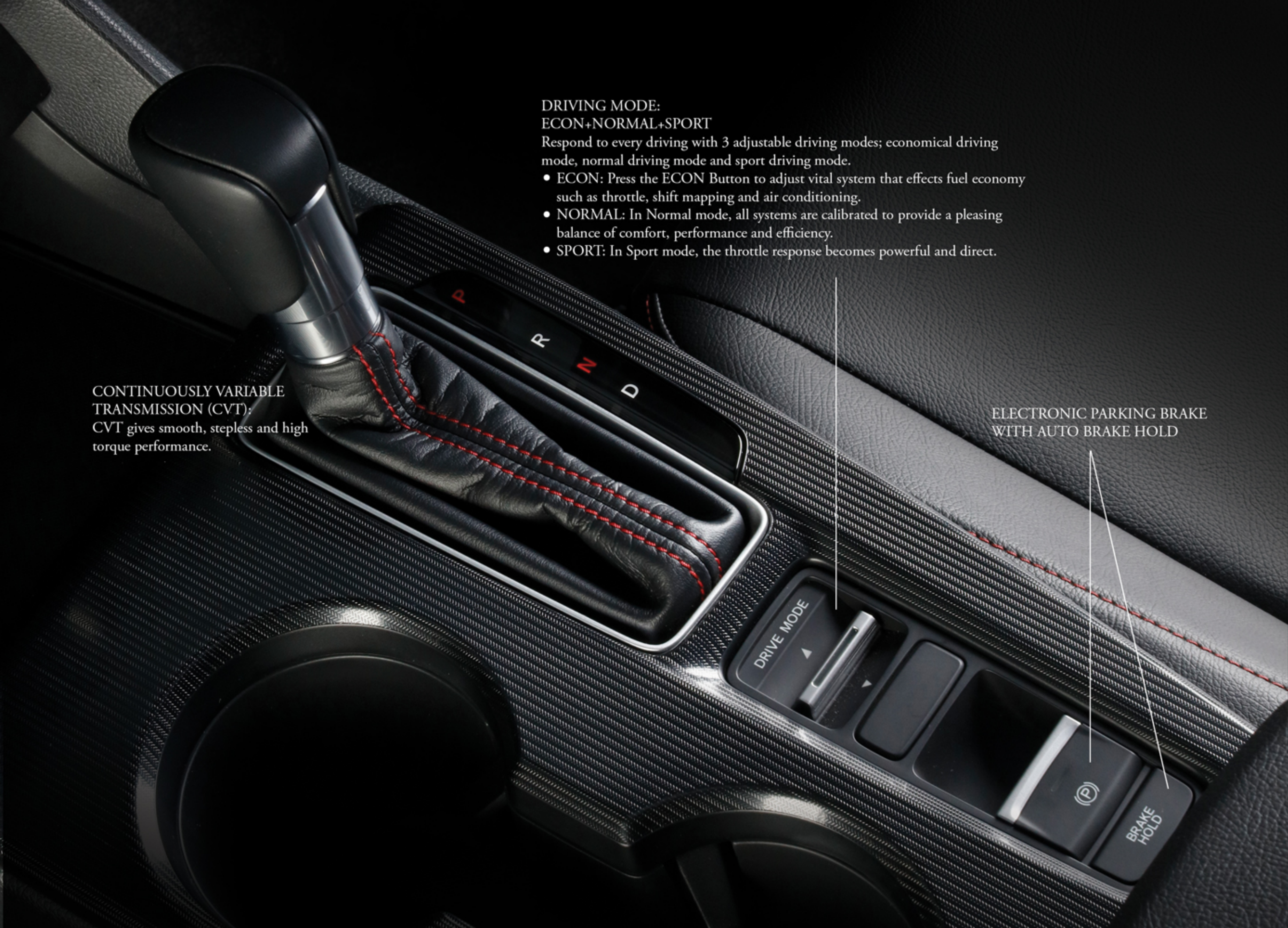
17" ALLOY WHEELS: Stunning Matte Black 17" Alloy Wheels.



BLACK PAINTED DOOR MIRRORS: Black painted door mirrors that are retracted automatically as car doors are locked/unlocked.



AN EXPANSION OF IMAGINATION



**DRIVING MODE:
ECON+NORMAL+SPORT**

Respond to every driving with 3 adjustable driving modes; economical driving mode, normal driving mode and sport driving mode.

- **ECON:** Press the ECON Button to adjust vital system that effects fuel economy such as throttle, shift mapping and air conditioning.
- **NORMAL:** In Normal mode, all systems are calibrated to provide a pleasing balance of comfort, performance and efficiency.
- **SPORT:** In Sport mode, the throttle response becomes powerful and direct.

**CONTINUOUSLY VARIABLE
TRANSMISSION (CVT):**
CVT gives smooth, stepless and high torque performance.

**ELECTRONIC PARKING BRAKE
WITH AUTO BRAKE HOLD**



AUTO DIMMING REAR VIEW MIRROR:
The automatic-dimming mirror darkens to reduce the glare. Reduced glare lessens night time eye strain, automatically adjusts all light conditions.



**INTERIOR LED LIGHTS AND FRONT ROOF
AMBIENT LIGHTS:** Light up the cabin space conveniently.



DOOR LINING ILLUMINATION (FRONT):
Elegant pattern of red illumination in front door lining.



POWER WINDOWS ALL AUTO:
Window Up/Down Auto and Power Door Lock.



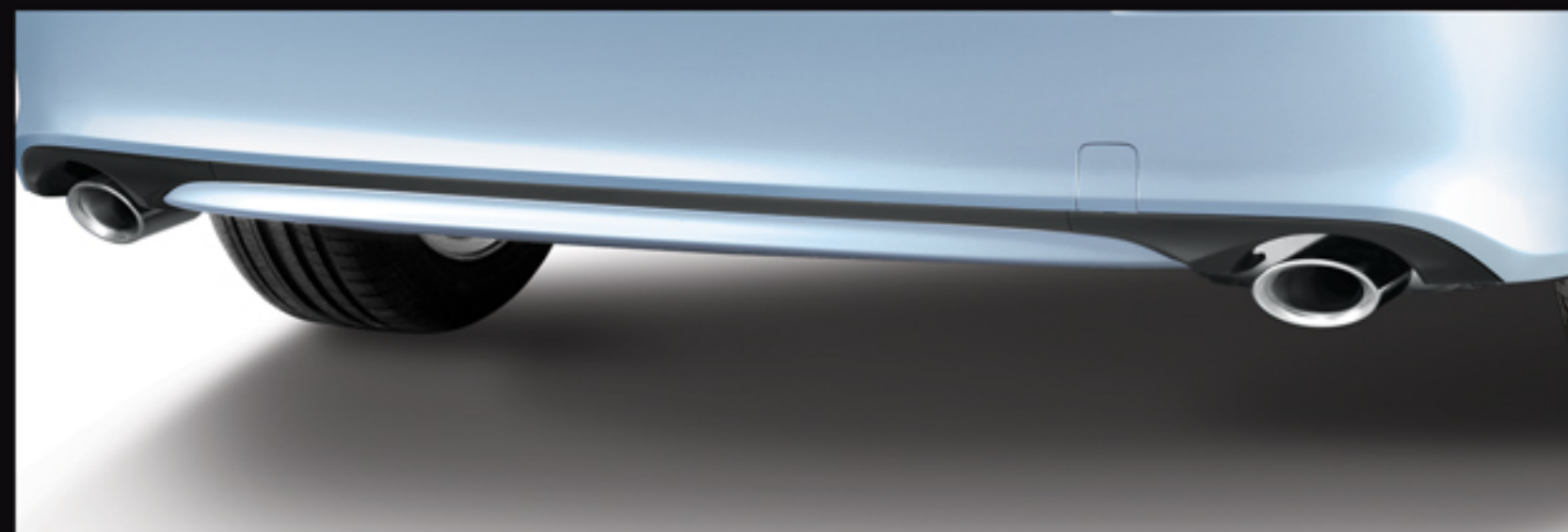
**USB PORT & ACCESSORY
SOCKET:**
Allows users to charge their smart phones.



FRONT CONSOLE LIGHT:
For clear visibility.



**SPORT PEDAL & FRONT FOOT
AMBIENT LIGHT:**
Sport Pedals bring a dash of racing-inspired style to the RS trim's interior.



DUAL EXHAUST: New Dual Exhaust System helps optimize air flow.



RS EMBLEM



ONE TOUCH SELF OPENING TRUNK



LED TAIL LIGHTS



STYLISH BLACK PAINTED SHARK FIN ANTENNA



HIGH MOUNT LED STOP LAMP



BLACK PAINTED TRUNK SPOILER

SPELLBOUND BY IT'S CHARM





PADDLE SHIFTERS



LEATHER WRAPPED STEERING

7" TFT Driver Information Interface



Rear Seat Reminder



Driver Attention Monitor



Open Door Indication



Boot Open Indication



Safety Support



9" Android based Touch screen with Navigation (3D Support), USB/Aux Cable, Fast Smart Phone Charging, FM/AM, Front/Rear/Internal Camera, Bluetooth Connectivity, Wi-fi Connectivity, Microphone, Hotspot Connectivity, Playstore, Tune-in Radio, Android/iPhone Connectivity, 4G Built-in Sim Slot, Voice Recognition Support.



DUAL AUTO AC



PUSH START BUTTON



Honda SENSING



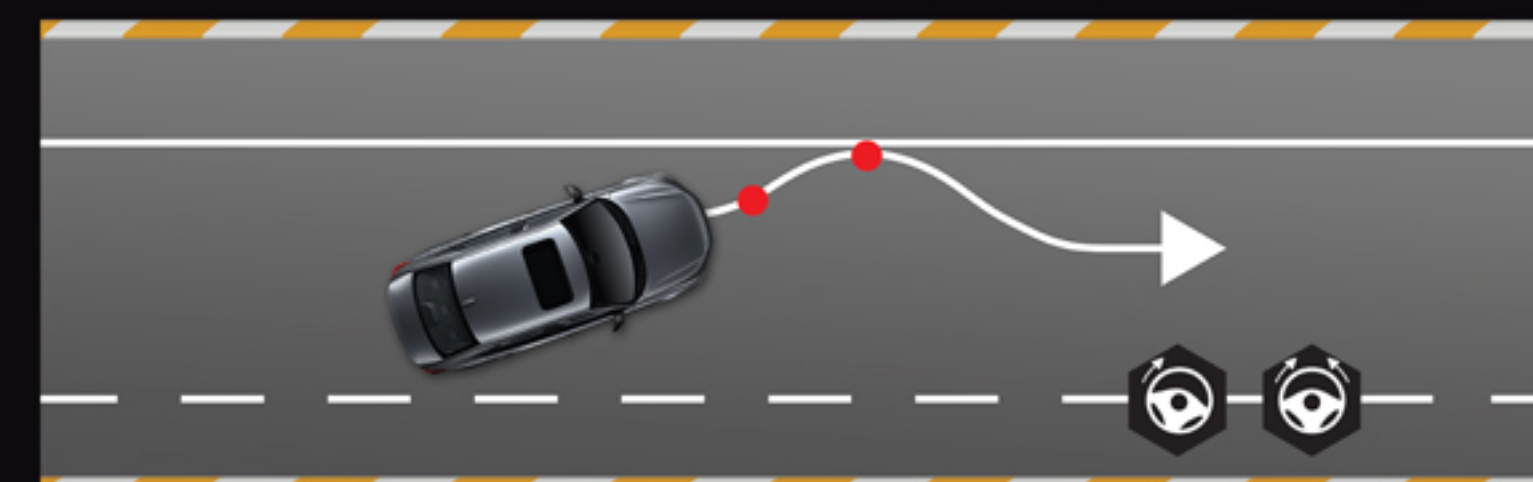
CMBS COLLISION MITIGATION BRAKING SYSTEM

This system detects preceding cars, oncoming cars, motorbikes and pedestrians to support collision avoidance by using a front wide view camera.



LCDN LEAD CAR DEPARTURE NOTIFICATION SYSTEM

At stops such as at a traffic light, it is a function to notify the driver about the departure of a preceding car.



RDM ROAD DEPARTURE MITIGATION SYSTEM

Road Departure Mitigation, or RDM System supports steering operation when the vehicle is likely to stray from the Road.



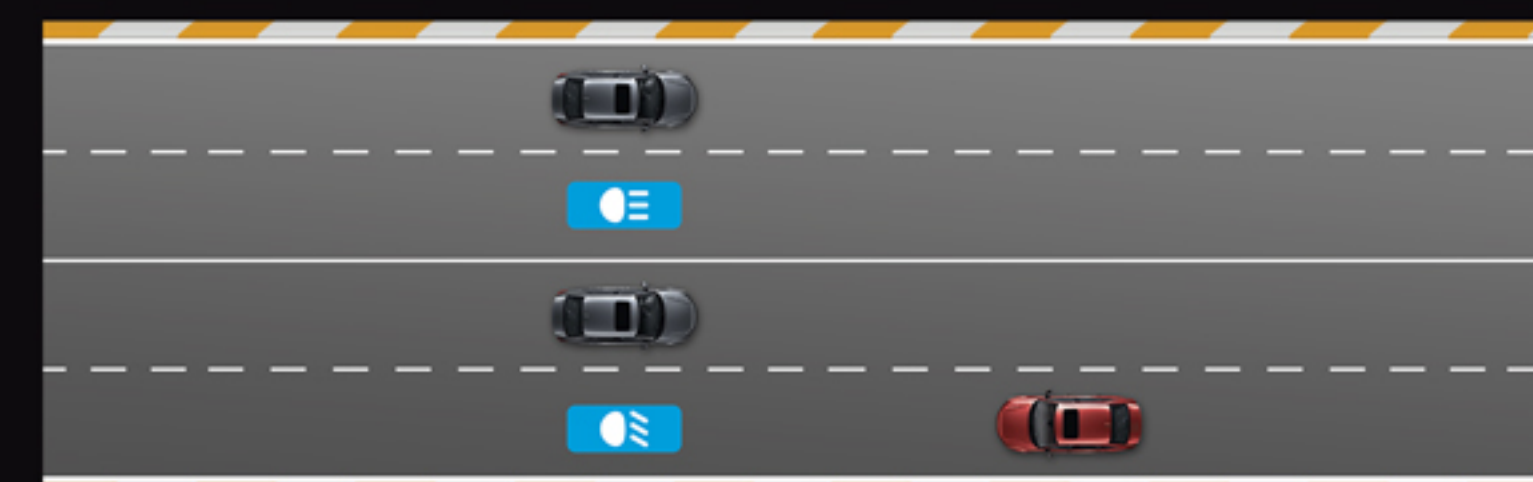
ACC ADAPTIVE CRUISE CONTROL (LOW-SPEED FOLLOW)

Adaptive Cruise Control is a support function to keep a distance with a preceding car. When driving on a highway, the system supports acceleration and braking operation to reduce load on the driver.



LKAS LANE KEEPING ASSIST SYSTEM

LKAS is a function that reduces the driver's load by supporting steering operation to keep driving along the center of a lane while driving.



AHB AUTO HIGH BEAM

When the headlight control is in the AUTO position, this system automatically turns on the high beam when there are no other vehicles detected. When another vehicle is detected, the high beam is automatically switched to low beam.

PLEASE SEE THE OWNER'S MANUAL OR OWNER'S GUIDE FOR ALL CONDITIONS & LIMITATIONS.



Oriel 1.5 VTEC TURBO

9" Android based Touch screen with Navigation (3D Support), USB/Aux Cable, Fast Smart Phone Charging, FM/AM, Front/Rear/Internal Camera, Bluetooth Connectivity, Wi-fi Connectivity, Microphone, Hotspot Connectivity, Playstore, Tune-in Radio, Android/iPhone Connectivity, 4G Built-in Sim Slot, Voice Recognition Support.



7" TFT Driver Information Interface



DUAL AUTO AC:
Auto temperature control will ensure a pleasureable cabin throughout your trip with Drive/Assistance separate temperature setting.



PUSH START BUTTON



TILT & TELESCOPIC STEERING:
Helps to adjust the steering wheel according to the driver's height by moving the wheel through tilted and telescopic movement.





LED SIDE TURN INDICATOR



PROJECTOR TYPE HALOGEN
HEADLIGHTS WITH LED DRL



LED FOG LIGHTS



MANUAL HEADLIGHT
ADJUSTER



NEVER A DULL MOMENT

CIVIC



COMFORT REDEFINED



ARMREST WITH CUP HOLDER



DRIVER SEAT HEIGHT ADJUSTER



CHROME INNER HANDLE



SUNGLASSES HOLDER



INTERIOR LED LIGHTS



REAR AC VENTS



POWER WINDOW UP/DOWN DR/AS AUTO



HIGH MOUNT STOP LAMP



DYNAMIC REAR VIEW CAMERA



SHARK FIN ANTENNA



LED TAIL LIGHTS



SPACIOUS TRUNK

SUPREMELY DYNAMIC & TRULY IMPRESSIVE





16" ALLOY WHEELS



SMART CLEAR INTERMITTENT WIPERS



NEW GENERATION STYLE FRONT GRILL



LAZER BRAZED ROOF (NOISELESS ROOF):
Realization of the sleek design by applying brazing to the roof.



SMART ENTRY & WALK-AWAY AUTO LOCKING:
Walk-away auto locking system automatically locks the car doors when the remote key is away from the vehicle.



TALK OF THE TOWN

SAFETY & CONTROL



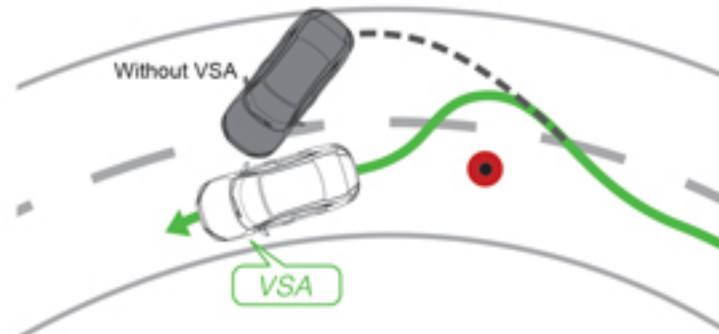
ELECTRONIC PARKING BRAKE WITH AUTO BRAKE HOLD:

New electric parking brake replaces the conventional hand lever with a simple, sleek switch. The Brake Hold engages.



HILL START ASSIST (HSA):

Prevents your vehicle from rolling backwards when starting.



VEHICLE STABILITY ASSIST:

Keeps your vehicle on its intended path of travel when an understeer or oversteer event occurs.



EMERGENCY STOP SIGNAL - ESS:

Relays the message of panic and emergency stop to drivers behind you, the system flashes the hazard lights as a warning.

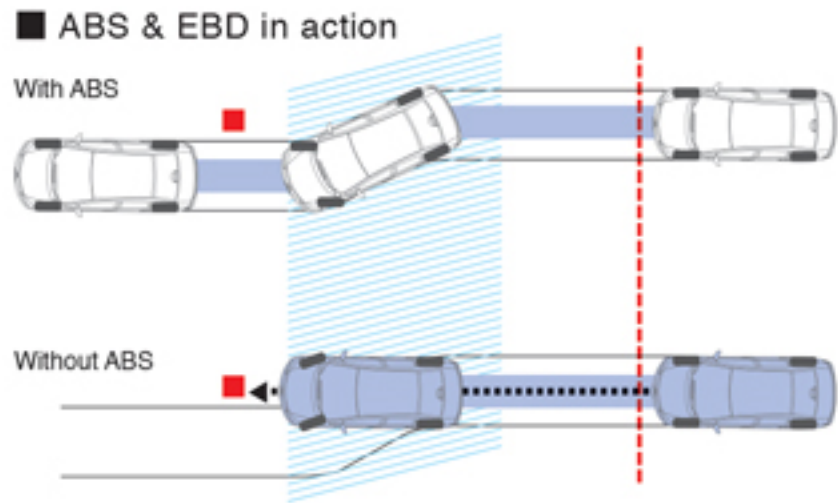
G-FORCE CONTROL (G-CON)

The All New Civic Engineering dissipates the energy of a crash away from the passenger compartment and minimizes the damage to other impacted vehicles.



DUAL SRS SUPPLEMENT RESTRAINT SYSTEM

Inside the Civic, you'll find a sophisticated combination of passive safety technologies designed to enhance occupant safety: dual SRS airbags, and 3-point ELR seat belts with pretensioners and load limiters.



ABS ANTI-LOCK BRAKING SYSTEM

Prevents your wheels from locking while braking hard, specially on slippery surfaces, and retain steering control.

TECHNICAL SPECIFICATIONS

Variant		Civic Oriel		Civic RS	
ENGINE & TRANSMISSION					
Engine Type		DOHC DUAL VTC+EXH-VTEC			
Fuel Supply System		(PGM FI)			
Engine Displacement		cc		1,498cc	
Bore & Stroke		mm		73X89.5	
Compression Ratio		10.3 : 1			
Power		(KW (HP) / RPM)		95 (127) / 5,500 ~ 6,000	
Torque		(N-m (Kg-m) /RPM)		180 (18.4) / 1,700 ~ 4,500	
Paddle Shifters		X		O	
Emission Rating		EURO 4			
Transmission		Continously Variable Transmission (M-CVT)		Continously Variable Transmission (LL-CVT)	
Driving Mode		ECON+Normal		ECON+Normal+Sport	
Turbo	Type	Single Scroll			
	Size of Turbo	RHF4			
	Blow-off Valve	O			
	Recommended Fuel	UNLEADED RON91			
SUSPENSION					
Front		Macpherson with Stabilizer			
Rear		Multilink with Stabilizer			
BRAKING SYSTEM					
Type		4-Wheel Disc (ABS)			
Parking Brake Type		Electric Parking Brake (EPB) with Auto Brake Hold (ABH)			
STEERING SYSTEM					
Gear Type		Rack & Pinion			
Power Steering System		Electric Power Steering (EPS)			
Minimum Turning Radius		m		5.3	
Cruise Control		O		Adaptive Cruise Control	
Steering Wheel	Material	Urethane		Leather	
	Adjustment	Tilt & Telescopic			
	Controls	Audio, MID, Cruise Control & Voice Recognition			
DIMENSIONS & WEIGHT					
Overall Length		mm		4,687	
Overall Width		mm		1,802	
Overall Height		mm		1,432	
Wheelbase		mm		2,735	
Tread (Front / Rear)		mm		1,543 / 1,569	
Ground Clearance		mm		154	
Seating Capacity		Persons		5	
Boot Capacity		L		409	
Fuel Tank Capacity		L		47	
EXTERIOR					
Trunk Spoiler		X		Black Painted	
RS Emblem		X		O (FR/RR)	
Headlights	Type	Halogen (Projector)		LED	
	Daytime Running Lights (DRL)	O			
	Auto Off Timer	O			
	Auto Head Light	X		O	
	Auto High Beam	X		O	
	Head Light Adjustment	Manual		Auto	
Sunroof		O			
Front Fog Lights		O (LED)			
Side Turn Indicator		Door Mirror Integrated (LED)			
One Touch Lane Winker		O			

TECHNICAL SPECIFICATIONS

Variant		Civic Oriel	Civic RS
EXTERIOR			
Tail Lamps		Lens Type	
Electrically Adjustable Door Mirrors		O	
Remote Retractable Mirrors		O	
Heated Door Mirrors		X	O
Door Mirrors Color		Body Color	Black Painted
Door Handles Color		Body Color	Black Painted
Front Wipers		Intermittent Wipers (Wash Combination)	Auto Wipers (Rain Sensor)
Arm Integrated Washer Nozzle (FR)		O	
Wheel Size and Type		16X7 J Alloy	17X7 J Alloy
Tyre Size		215/55 R16	215/50 R17
Spare Wheel		16" Steel Wheel	17" Alloy
Roof Laser Brazing (Noiseless Roof)		O	
Dual Exhaust		X	O
Remote Engine Start		X	O
One Push Start		O	
Card Key		X	O
Keyless Entry		O (With Smart Entry)	
Radio Antenna		Shark Fin (Body Color)	Shark Fin (Black Painted)
INTERIOR			
Interior Color		Grayge	Black
Audio	Type	9" Android based Navigation	
	Front Camera	O	
	Dynamic Rear Camera	O	
	Web Cam	O	
	Speakers	4	
Instrument Cluster	Type	7" TFT Meter	
	Multi Information Display	O	
	Oil Monitor System	O	
Air Conditioning System		Dual Auto Aircon (Rear Ventilation)	
Seats	Height Adjuster	Driver Side (Manual)	
	Material	Hi-Grade	
	Seat Back Pockets	Driver & Passenger Seats	
Power Window	Up/Down Auto	Driver & Passenger	All
Power Door Locks		Driver & Passenger	
Interior Lights	Front Map Light	O	
	Center Console Light	X	O (LED)
	Interior Light Type	LED	
	Cargo Light	O (Bulb)	
Sunglasses Holder		O	
Front Door Lining Illumination		X	O
Front Roof Ambient Light		X	O (LED)
Rear View Mirror		Day & Night (Manual)	Auto Dimming
Sunvisor		Driver & Passenger (with Vanity Mirror)	
Select Knob		Resin with Black Push Knob	Leather with Chrome Push Knob
Front USB Port		O	
Front Accessory Socket		O	
Armrest	Front Center Console	With Cup Holders	
	Rear Seat	Foldable with Cup Holders	
Coat Hanger		O	
Self Opening Trunk		O	
Trunk Hinge Cover		O	
Sport Pedal		X	O
Trunk Lid Lining		O	

TECHNICAL SPECIFICATIONS

Variant		Civic Oriel	Civic RS
SAFETY & SECURITY			
Honda Sensing	Collision Mitigation Braking System (CMBS)	X	O
	Adaptive Cruise Control (ACC)	X	O (Low-Speed Follow)
	Lane Keep Assist System (LKAS)	X	O
	Road Departure Mitigation System (RDM)	X	O
	Lead Car Departure Notification System (LCDN)	X	O
	Auto High Beam (AHB)	X	O
Anti-Lock Braking System (ABS)		O (With Electronic Brake-Force Distribution)	
SRS Airbags		Driver & Front Passenger	
Vehicle Stability Assist (VSA)		O (With Traction Control)	
Hill Start Assist (HSA)		O	
Emergency Stop Signal (ESS)		O	
Driver Attention Monitor		O	
High Mount Stop Lamp		O (Bulb)	O (LED)
Auto Door Lock by Speed		O	
Seat Belts	Seat Belt Reminder	O (DR Only)	
	Front	3 pt. ELR (Driver & Passenger)	
	Rear	3 pt. ELR x 3	
Rear Seat Reminder		O	
Walk Away Auto Locking		O	
Child Lock		O	
Immobilizer		O	
Security Alarm		O	
Smart Buzzer		O	
OPTIONAL FEATURES			
Hi-Grade Seats (Black)		O	-
Hi-Grade Seats (Burgendy)		O	
Internet Package (Applicable with 9" Android based Navigation)		O	
Floor Mats		O	
Door Visors		O	
Trunk Tray		O	

Honda Atlas Cars (Pakistan) Limited reserves the right to change or modify equipment or specifications at any time without prior notice. Details, colors, descriptions and illustrations are for information purpose only.

Optional features are subject to prices. For further details please check with your nearest Honda dealer or visit www.honda.com.pk

www.honda.com.pk

[f/hacpl](#)

[/hondapakistanofficial](#)

[/HondaAtlasCarsPakistanLimited](#)



Morning Mist Blue Metallic
(OPTIONAL)



Meteoroid Gray Metallic
(OPTIONAL)



Urban Titanium Metallic



Carnelian Red Pearl



Lunar Silver Metallic



Crystal Black Pearl



Taffeta White

o : Standard equipment x : Not available

Honda
SENSING

*Despite the immaculate capabilities of Honda Sensing, drivers should always be aware of their surroundings and drive safely.
*Please see the owner's manual or owner's guide for all conditions & Limitations.